

ITEM	NO. RECD	PART NO.	PART NAME
①	1	5273548	POWER END ASSEMBLY:
②	1	5260310	FLUID CYLINDER GROUP:
③	1	5273637	ATTACHING GROUP:
④	1	5273635	CYLINDER GROUP:
⑤	2	3267699	PISTON CUP: 1/4"
⑥	1	5266228	LIT KIT:
* ⑦	4	5260142	VALVE SEAT:
* ⑧	4	1219610	CAGE:
* ⑨	4	5253499	DISC & SPRING ASSEMBLY:
* ⑩	2	1219614	VALVE COVER:
* ⑪	6	1177394	O-RING: 1 3/16" OD X 1/8" NOM., BUNA-N
* ⑫	1	1255887	VALVE COVER CLAMP:
* ⑬	1	1100064	HEX HD CAP SCREW: 1/2-13 X 1/2" LG.
* ⑭	1	5257095	FLUID CYLINDER:
** ⑮	2	1279148	UMBRELLA: BLACK
** ⑯	2	1269388	UMBRELLA WASHER:
** ⑰	2	1101339	O-RING: 1 1/16" OD X 1/16" NOM., BUNA-N
** ⑱	1	1177200	CAPLUG: INT. 12
** ⑲	1	1177201	CAPLUG: INT. 14
** ⑳	3	1101262	HEX HD CAP SCREW: 3/8-16 X 5" LG.
*** ㉑	4	A91684	CYLINDER GASKET:
*** ㉒	2	1279920	CERAMIC CYLINDER:
*** ㉓	2	1282635	PISTON HOLDER:
*** ㉔	2	5257216	PISTON WASHER:
*** ㉕	2	1284516	HEX HD CAP SCREW: 5/16-18 X 1/2" LG.
*** ㉖	2	1285170	SEAL RING:
*** ㉗	2	1177841	O-RING: 2 1/8" OD X 1/16" BUNA-N



* THESE COMPONENTS ARE LOCATED IN THE FLUID CYLINDER GROUP, ITEM ②
 ** THESE COMPONENTS ARE LOCATED IN THE ATTACHING GROUP, ITEM ③
 *** THESE COMPONENTS ARE LOCATED IN THE CYLINDER GROUP, ITEM ④

- NOTES:
- 1 TORQUE FASTENERS PER FMC ENGR SPEC AS-22
 - 2 TEST PUMP PER FMC ENGR SPEC AS-15
 - 3 STAMP NAMEPLATE PER FMC ENGR SPEC AS-21
 - 4 PAINT PUMP PER FMC ENGR SPEC CP-28

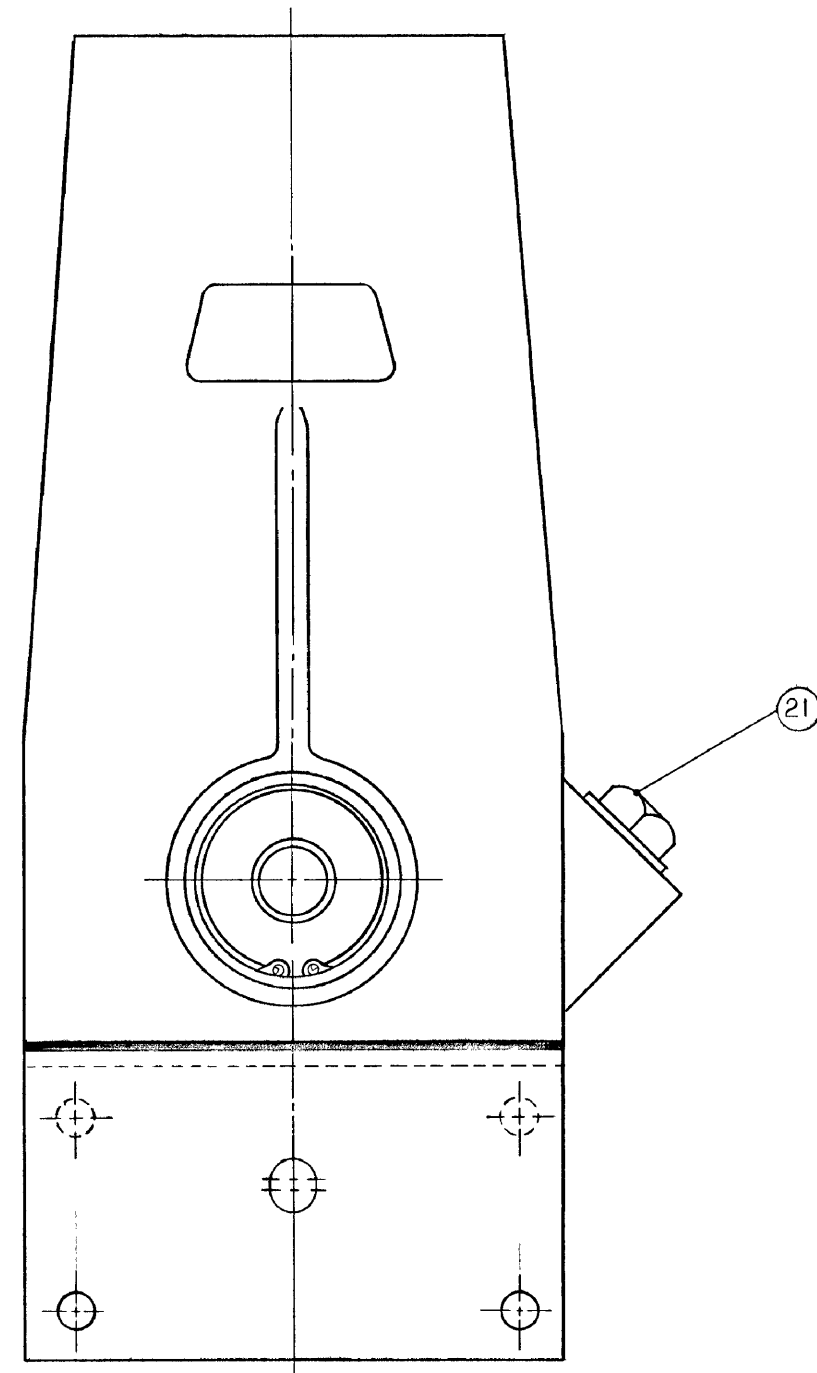
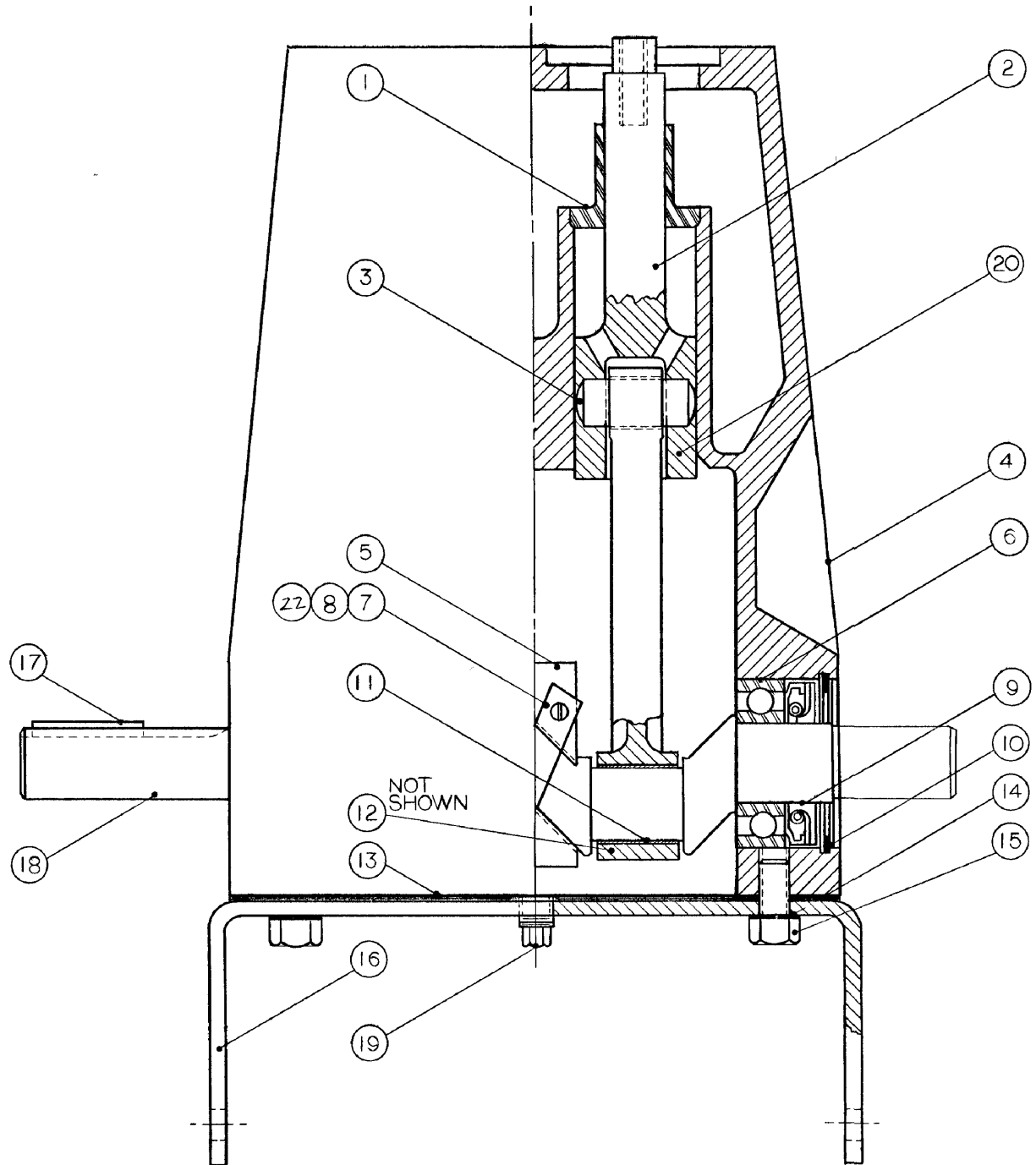
This drawing is the property of FMC Corporation, and may not be used, reproduced, published, or disclosed to others, without express authorization FMC Corp.	FMC Corporation Fluid Control Division 2825 W. Washington Box 1377 Stephenville, Texas 76481

L	REV BOM	500285	JCF	05-08-98	RELEASED FOR PRODUCTION	DATE	04-28-98	DRAWN	JMW	04-02-98	SCALE:	NONE
K	REV DIGITIZE	500285	JMW	04-02-98	ECN			CKD.	BKM	04-2-98	SIZE	DRAWING NO.
REV	WAS		ECN	BY	DATE	✓	04-28-98	APPD.	GG	04-28-98	D	1280174

1280174

PARTS LIST					
CHANGES	ITEM NO	NO REQ'D	DESCRIPTION	PART NUMBER	QTY
	1	2	CROSSHEAD, SLEEVE	1218743	A
	2	2	ASSEMBLY CONNECTING ROD	1263906	B
	3	2	WRIST PIN	1219650	A
	4	1	CASE	1267611	D
	5	1	OIL SLINGER	1255285	B
	6	2	BEARING FAFNIR 205 W	1177804	-
A	7	1	BOLTING STRIP	5241980	A
A	8	2	STOP NUT	1177576	-
	9	2	SEAL GARLOCK 205	1219669	-
	10	2	SNAP RING 5000-206	1113528	-
	11	4	BEARING INSERT	1263739	B
	12	4	HHCS 1/4-20x1 LOCK	1278439	-
	13	1	GASKET, BASE	1219606	B
	14	6	WASHER, WAVE	1177455	-
	15	6	HH CAP SCR 3/8-16x3/4	1100068	-
	16	1	BASE	1255297	B
	17	1	KEY 3/16 x 1-1/2	1108841	-
	18	1	CRANKSHAFT	1244980	C
	19	1	PIPE PLUG 1/4	1109666	-
	20	2	CROSSHEAD	1216823	B
	21	1	PIPE PLUG 3/4 SQ HD GALV	1105060	-
A	22	2	HEX HD CAP SCREW #10-24x 3/4 LG	320502	-
	23	1	NAMEPLATE	5277981	A
	24	2	SELF TAPPING SCREW	1187413	-

△△△
 △△
 △



PUMP SPECS:

1. APPLY LIGHT OIL TO CONNECTING ROD BEARINGS, WRIST PINS AND CROSSHEADS (ITEMS 3, 23 & 11).
2. BOLT AND NUT TORQUES:
 CONNECTING ROD BOLTS 6-8 FT LBS.
 MOUNTING BASE BOLTS 15-20 FT LBS.

E REVISED BOM		DRAWN MBE		TOLERANCE ON DIMENSIONS NOT OTHERWISE SPECIFIED		FMC Corporation	
D CHANGE ITEM 22		CHECKED		FRACTIONAL DECIMAL ANGULAR		Agricultural Machinery Division	
C REV BOM ITEM 7, 22 + TITLE		APPROVED		POWER END ASSEMBLY		Jonesboro Arkansas	
B ADDED NAMEPLATE		DATE 10-5-89		RH DRIVE A04		NC	
A NUMEROUS CHANGES, SEE ECN		SCALE NONE		MATERIAL		FILE SIZE D	
TOTAL WEIGHT	TOTAL WELD	PAINT SPEC	DATE	MATERIAL	PART NO	5273548	
		1403080	10-5-89	SEE BOM			

NEXT ASSEMBLY NO REQD PER ASSEM
 FIRST MADE FOR