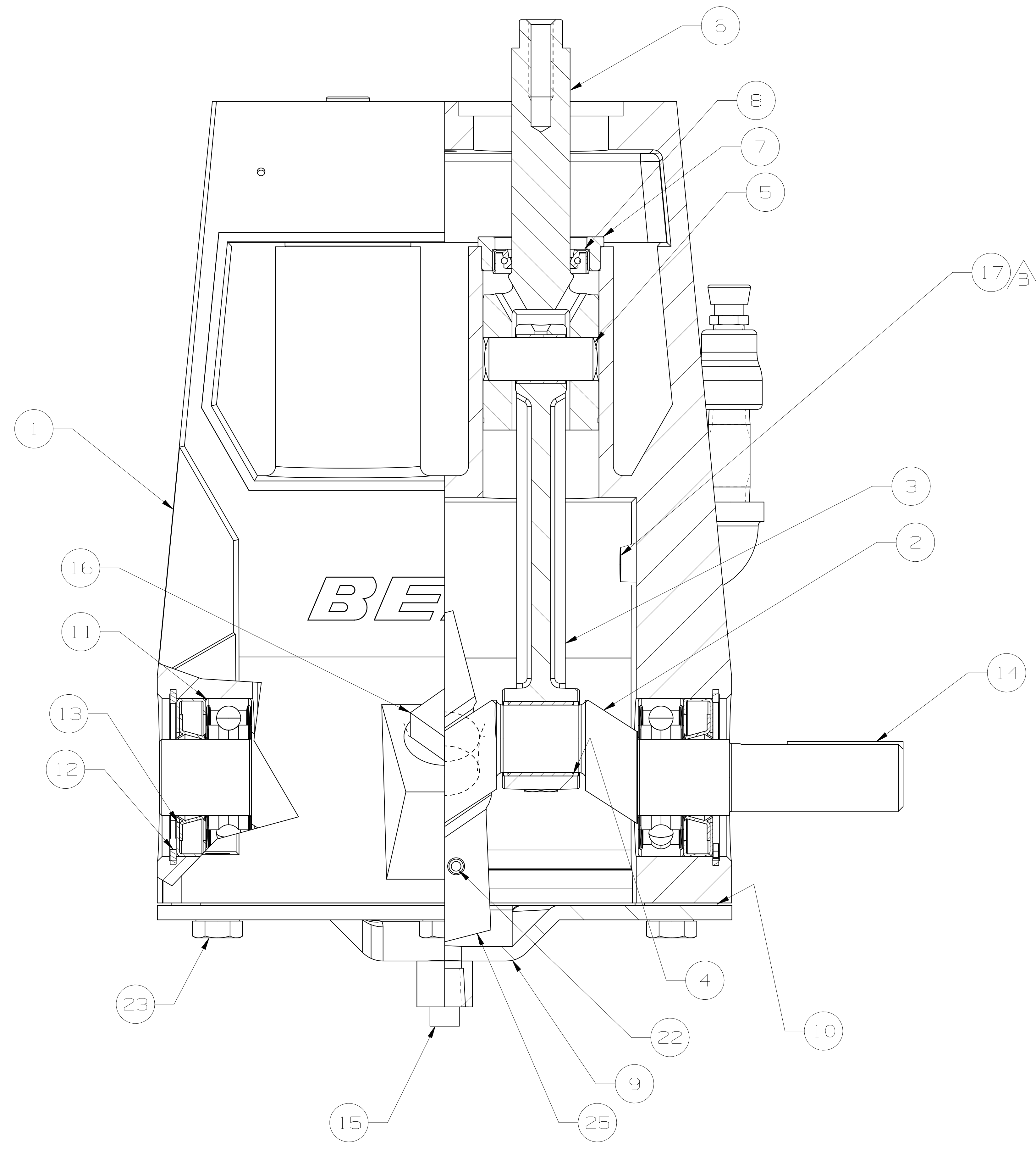


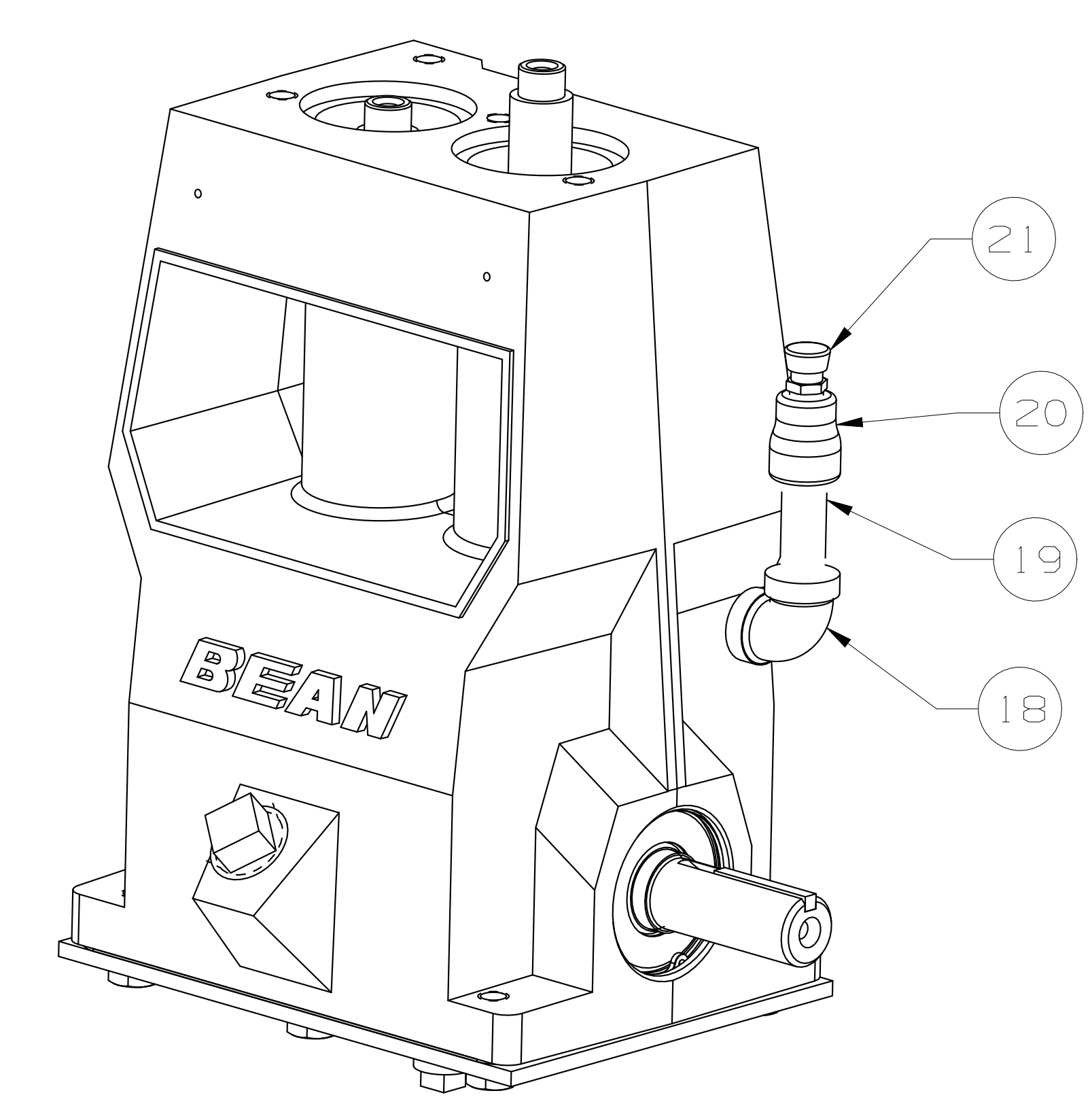
ITEM	DESCRIPTION	QTY
1	POWER END ASSEMBLY:	1
2	FLUID CYLINDER:	1
3	VALVE CAGE:	4
4	SEAT:	4
5	SPRING AND DISC ASSEMBLY:	4
6	CYLINDER:	2
7	PISTON CUP;	2
8	PISTON HOLDER: A04	2
9	UMBRELLA: F/EO4	2
10	WASHER: UMBRELLA	2
11	CUP WASHER: A04	2
12	VALVE COVER:	2
13	VALVE COVER CLAMP:	1
14	O-RING: UNIFORM #015	2
15	O-RING: UNIFORM #033	2
16	O-RING: UNIFORM #213	6
17	GASKET: VALVE COVER	2
18	RING SEAL: CYLINDER	2
19	CAP SCREW: HEX HEAD, 5/16 X 1.50 LG	2
20	CAP SCREW: HEX HEAD, 1/2 X 1.50 LG	1
21	CAP SCREW: HEX HEAD, 3/8 X 5.00 LG	3
22	NAMEPLATE:	1
23	SELF TAPPING SCREW:	2
24	THREAD PROTECTOR: CAPPLUGS #T-9 (N.S.)	1
25	CAPPLUG: INT 14 (NOT SHOWN)	1

SECTION A - A

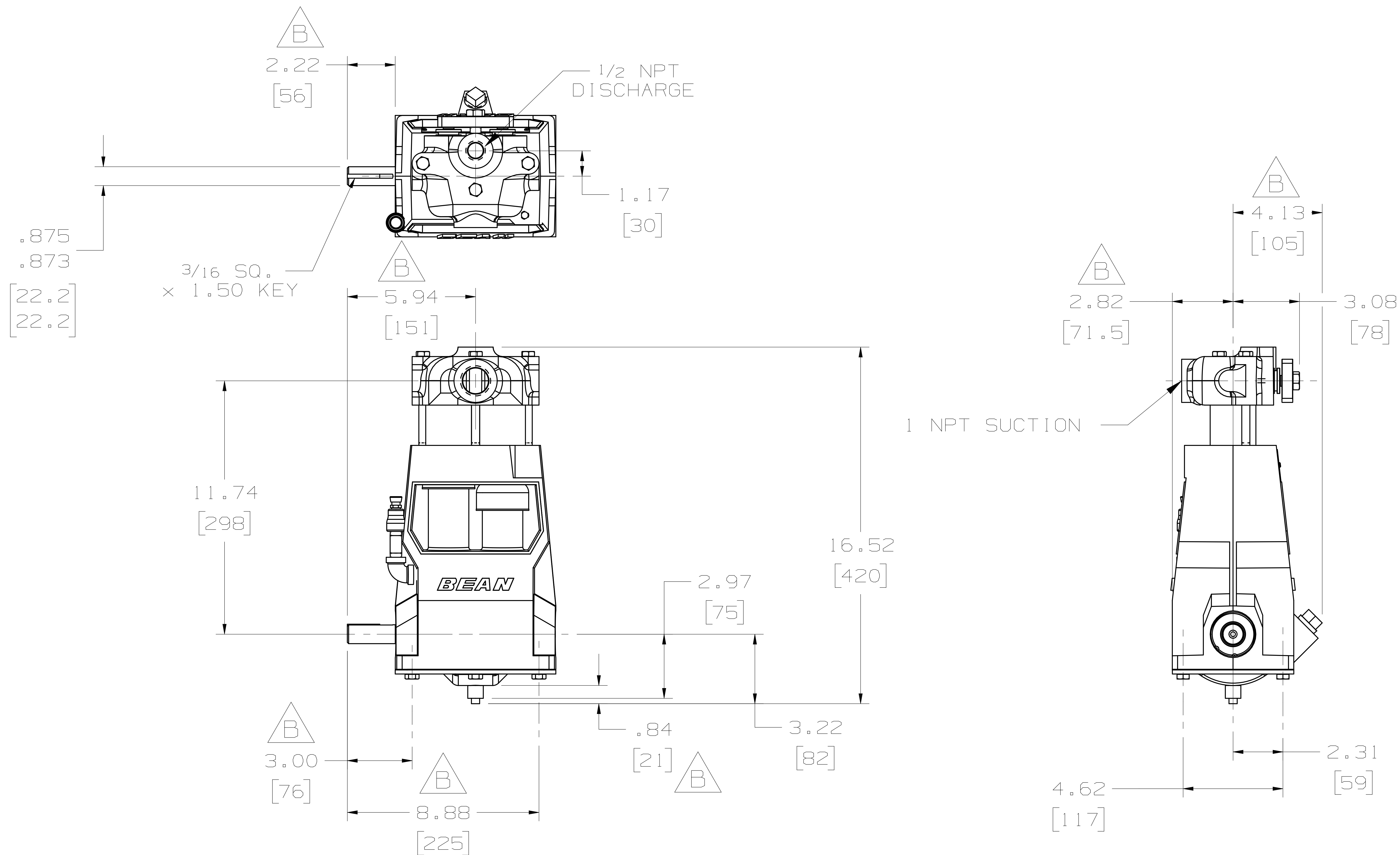
PRIVATE AND CONFIDENTIAL THIS DOCUMENT AND ALL THE INFORMATION CONTAINED HEREIN ARE THE CONFIDENTIAL AND EXCLUSIVE PROPERTY OF FMC TECHNOLOGIES AND MAY NOT BE REPRODUCED, USED, DISCLOSED, OR MADE PUBLIC IN ANY MANNER PRIOR TO EXPRESS WRITTEN AUTHORIZATION BY FMC TECHNOLOGIES. THIS DOCUMENT IS ACCEPTED PURSUANT TO AGREEMENT TO THE FOREGOING, AND MUST BE RETURNED UPON DEMAND. MANUFACTURER AGREES THAT ARTICLES MADE IN ACCORDANCE WITH THIS DOCUMENT SHALL BE CONSIDERED FMC TECHNOLOGIES' DESIGN, AND THAT IDENTICAL ARTICLES OR PARTS THEREOF SHALL NOT BE MANUFACTURED FOR THE USE OR SALE BY MANUFACTURER OR ANY OTHER PERSON OR ENTITY WITHOUT PRIOR EXPRESS WRITTEN AUTHORIZATION BY FMC TECHNOLOGIES.	UNLESS OTHERWISE SPECIFIED DO NOT SCALE THIS DRAWING ALL DIMENSIONS ARE IN INCHES (MM) BREAK SHARP EDGES .015 (1.381) MAXIMUM INSIDE CORNER RADIUS .030 (1.762) MAXIMUM THREADS CONFORM TO FEDERAL STANDARD H-28 TAPERED THREADS CONFORM TO API 6A BOLT HOLES MUST STRADDLE COMMON CENTERLINE FINISH 250 RMS ALL DIA'S CONCENTRIC WITHIN .010 (1.254) T.I.R.	TOLERANCE .X .. ± .030 (10.762) .XX .. ± .015 (10.381) .XXX .. ± .005 (10.127) ANGLE .. ± 0° 30'	DESCRIPTION PUMP ASSEMBLY: A0410 RH, W/1 NPT X 1/2 NPT FLUID END, ABRASIVE SERVICE PISTON, DISC VALVE ASSEMBLIES	DRAWN BY: WILLIAMS, ANTHONY	DATE: 16-FEB-2011
				DRAFTING CHECK: LOUDERMILK, STEVE	DATE: 18-AUG-2011
				LATEST ECN NO. 5026111	REV. B
				DRAWING NUMBER DUS00012573	SHEET 1/2



ITEM	DESCRIPTION	QTY
1	POWER FRAME:	1
2	CRANKSHAFT:	1
3	CONNECTING ROD:	2
4	ROD BEARING: HALF SHELL	4
5	WRIST PIN:	2
6	CROSSHEAD:	2
7	SEAL HOLDER:	2
8	SEAL: PONY ROD	2
9	BACK COVER:	1
10	GASKET: BACK COVER	1
11	BALL BEARING:	2
12	RETAINING RING:	2
13	SHAFT SEAL:	2
14	KEY: 3/16 SQ X 1.5 LG	1
15	PIPE PLUG: 1/4 NPT	1
16	PIPE PLUG: SQ HEAD, 3/4 NPT	1
17	NIPPLE: 1/4 SCH 40, 1/4 NPT X 1.00	1
18	ELBOW: 1/4 FEMALE NPT	1
19	NIPPLE: 1/4 S40, 1/4 NPT X 2.00LG	1
20	REDUCER: 1/4 NPT X 1/8 NPT	1
21	LUBE VENT: 1/8 PTF	1
22	CAP SCREW: HEX HD #10 X .75 LG	2
23	CAP SCREW: HEX HEAD, 3/8 X .75 LG	6
24	BOLTING STRIP: NOT SHOWN	1
25	OIL SLINGER: RH	1
26	HEX NUT: #10 NOT SHOWN	2



PRIVATE AND CONFIDENTIAL THIS DOCUMENT AND ALL THE INFORMATION CONTAINED HEREIN ARE THE CONFIDENTIAL AND EXCLUSIVE PROPERTY OF FMC TECHNOLOGIES AND MAY NOT BE REPRODUCED, USED, DISCLOSED, OR MADE PUBLIC IN ANY MANNER PRIOR TO EXPRESS WRITTEN AUTHORIZATION BY FMC TECHNOLOGIES. THIS DOCUMENT IS ACCEPTED PURSUANT TO AGREEMENT TO THE FOREGOING, AND MUST BE RETURNED UPON DEMAND. MANUFACTURER AGREES THAT ARTICLES MADE IN ACCORDANCE WITH THIS DOCUMENT SHALL BE CONSIDERED FMC TECHNOLOGIES' DESIGN, AND THAT IDENTICAL ARTICLES OR PARTS THEREOF SHALL NOT BE MANUFACTURED FOR THE USE OR SALE BY MANUFACTURER OR ANY OTHER PERSON OR ENTITY WITHOUT PRIOR EXPRESS WRITTEN AUTHORIZATION BY FMC TECHNOLOGIES.	UNLESS OTHERWISE SPECIFIED DO NOT SCALE THIS DRAWING ALL DIMENSIONS ARE IN INCHES (MM) BREAK SHARP EDGES .015 (1.381) MAXIMUM INSIDE CORNER RADIUS .030 (1.762) MAXIMUM THREADS CONFORM TO FEDERAL STANDARD H-28 TAPERED THREADS CONFORM TO API 6A BOLT HOLES MUST STRADDLE COMMON CENTERLINE FINISH 250 RMS ALL DIA'S CONCENTRIC WITHIN .010 (1.254) T.I.R.	TOLERANCE .X -- ± .030 (0.762) .XX -- ± .015 (0.381) .XXX -- ± .005 (0.127) ANGLE -- ± 0° 30'	DESCRIPTION POWER END ASSEMBLY: A04, W/2.25 LG SHAFT, NO MOUNTING HOLES IN BACKCOVER & LUBE VENT	DRAWN BY: WILLIAMS, ANTHONY	DATE: 16-FEB-2011	FMC Technologies	
				DRAFTING CHECK: LOUDERMILK, STEVE	DATE: 18-AUG-2011		DESIGN REVIEW: MCCLAIN, MATHEW
				MANUFACTURING APPROVAL: APPROVED BY: LYON, TIM	DATE: 21-SEP-2011	LATEST EGN. NO. 5026111	REV. B
				DRAWING NUMBER DUS00004948		SHEET 1/1	COPYRIGHT FMC TECHNOLOGIES



PRIVATE AND CONFIDENTIAL

THIS DOCUMENT AND ALL THE INFORMATION CONTAINED HEREIN ARE THE CONFIDENTIAL AND EXCLUSIVE PROPERTY OF FMC TECHNOLOGIES AND MAY NOT BE REPRODUCED, USED, DISCLOSED, OR MADE PUBLIC IN ANY MANNER PRIOR TO EXPRESS WRITTEN AUTHORIZATION BY FMC TECHNOLOGIES. THIS DOCUMENT IS ACCEPTED PURSUANT TO AGREEMENT TO THE FOREGOING, AND MUST BE RETURNED UPON DEMAND.

MANUFACTURER AGREES THAT ARTICLES MADE IN ACCORDANCE WITH THIS DOCUMENT SHALL BE CONSIDERED FMC TECHNOLOGIES' DESIGN, AND THAT IDENTICAL ARTICLES OR PARTS THEREOF SHALL NOT BE MANUFACTURED FOR THE USE OR SALE BY MANUFACTURER OR ANY OTHER PERSON OR ENTITY WITHOUT PRIOR EXPRESS WRITTEN AUTHORIZATION BY FMC TECHNOLOGIES.

ENGINEERING
DIMENSIONAL
OUTLINE

DESCRIPTION

PUMP ASSEMBLY; A0410 RH,
W/1 NPT X 1/2 NPT FLUID
END, ABRASIVE SERVICE
PISTON, DISC VALVE
ASSEMBLIES

DRAWN BY:

WILLIAMS, ANTHONY

DATE:

16-FEB-2011

DRAFTING CHECK:

LOUDERMILK, STEVE

DATE:

18-AUG-2011

DESIGN REVIEW:

MCCLAIN, MATHEW

DATE:

30-AUG-2011

MANUFACTURING APPROVAL:

DATE:

APPROVED BY:

LYON, TIM

DATE:

21-SEP-2011

FMC Technologies

LATEST ECN NO.

5026111

REV.

B

DRAWING NUMBER

DU500012573

SHEET

2/2

COPYRIGHT FMC TECHNOLOGIES