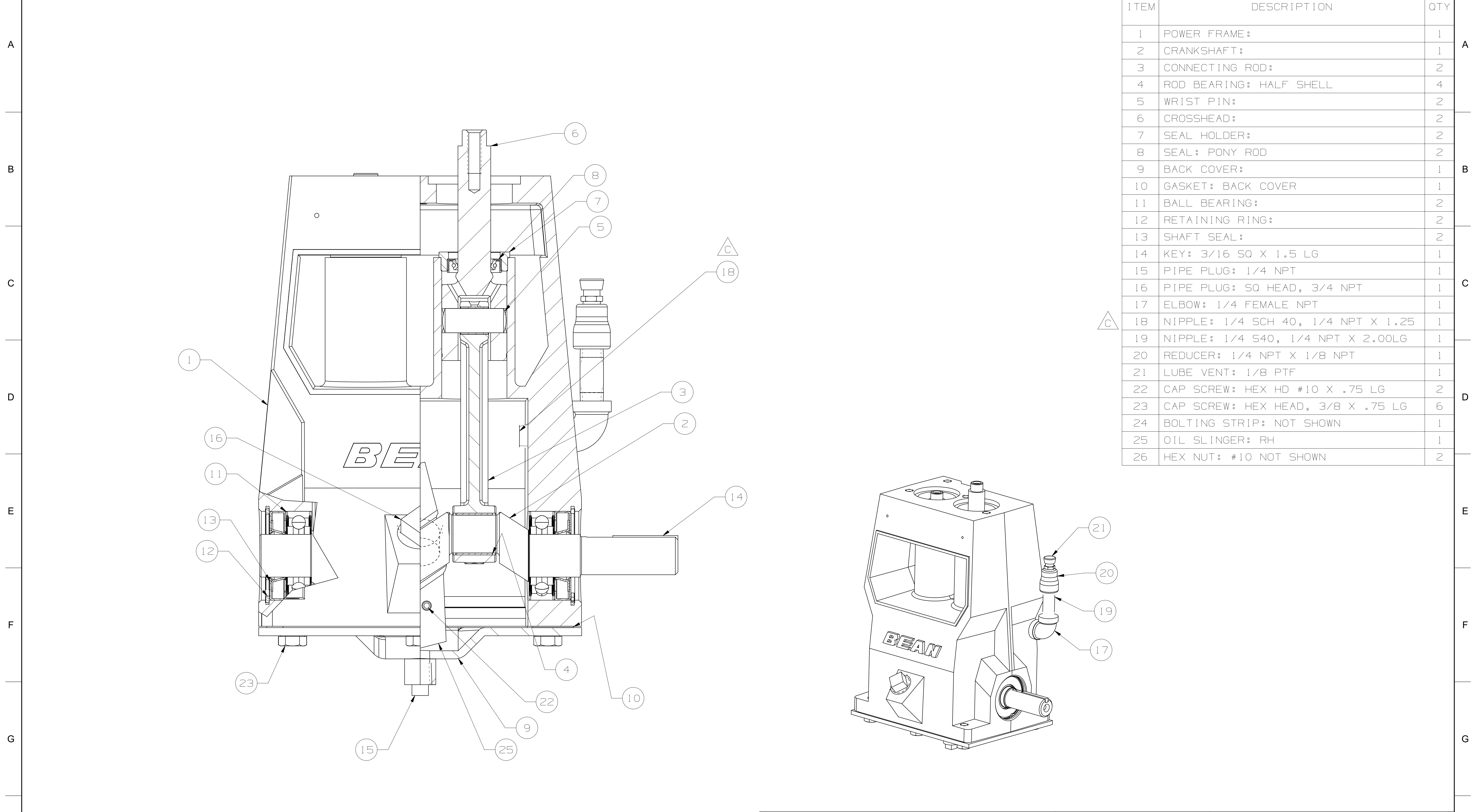


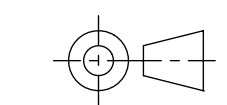
SECTION A - A

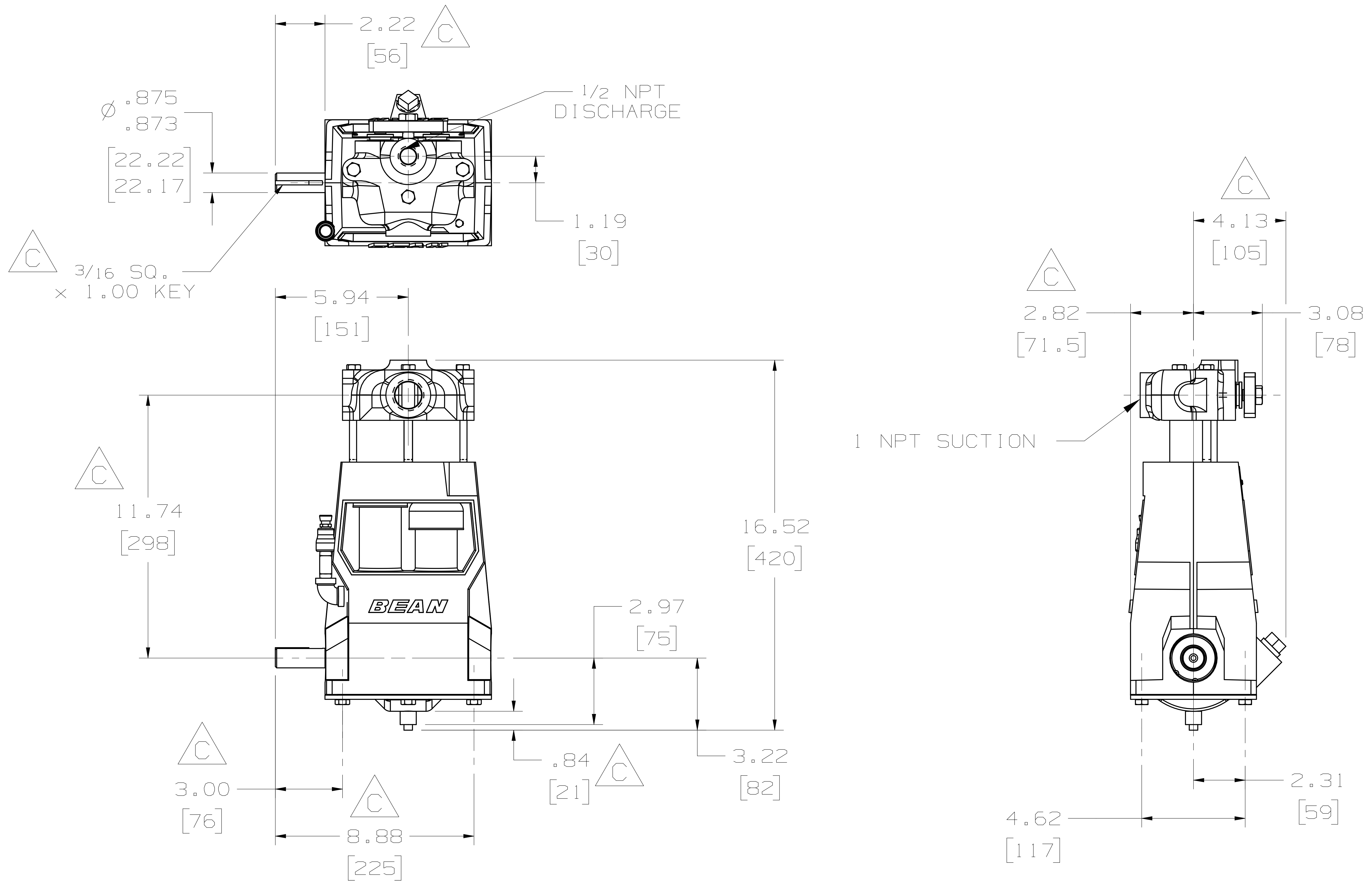
ITEM	DESCRIPTION	QTY
1	POWER END ASSEMBLY:	1
2	FLUID CYLINDER:	1
3	SPRING AND DISC ASSEMBLY:	4
4	SEAT:	4
5	CYLINDER:	2
6	PISTON CUP:	2
7	PISTON HOLDER:	2
8	PISTON RETAINER:	2
9	VALVE CAGE:	4
10	RING SEAL: CYLINDER	2
11	UMBRELLA: F/E04	2
12	WASHER: UMBRELLA	2
13	VALVE COVER:	2
14	VALVE COVER CLAMP:	1
15	GASKET: VALVE COVER	2
16	O-RING: UNIFORM #213	6
17	O-RING: UNIFORM #033	2
18	O-RING: UNIFORM #015	2
19	CAP SCREW: HEX HEAD, 1/2 X 1.50 LG	1
20	CAP SCREW: HEX HEAD, 3/8 X 5.00 LG	3
21	CAP SCREW: HEX HEAD, 5/16 X 1.50 LG	2
22	NAMEPLATE:	1
23	SELF TAPPING SCREW:	2
24	CAPLUG: INT 14 (NOT SHOWN)	1
25	CAPLUG: #T-9 (NOT SHOWN)	1

PRIVATE AND CONFIDENTIAL THIS DOCUMENT AND ALL THE INFORMATION CONTAINED HEREIN ARE THE CONFIDENTIAL AND EXCLUSIVE PROPERTY OF FMC TECHNOLOGIES AND MAY NOT BE REPRODUCED, USED, DISCLOSED, OR MADE PUBLIC IN ANY MANNER PRIOR TO EXPRESS WRITTEN AUTHORIZATION BY FMC TECHNOLOGIES. THIS DOCUMENT IS ACCEPTED PURSUANT TO AGREEMENT TO THE FOREGOING, AND MUST BE RETURNED UPON DEMAND. MANUFACTURER AGREES THAT ARTICLES MADE IN ACCORDANCE WITH THIS DOCUMENT SHALL BE CONSIDERED FMC TECHNOLOGIES' DESIGN, AND THAT IDENTICAL ARTICLES OR PARTS THEREOF SHALL NOT BE MANUFACTURED FOR THE USE OR SALE BY MANUFACTURER OR ANY OTHER PERSON OR ENTITY WITHOUT PRIOR EXPRESS WRITTEN AUTHORIZATION BY FMC TECHNOLOGIES.	UNLESS OTHERWISE SPECIFIED DO NOT SCALE THIS DRAWING ALL DIMENSIONS ARE IN INCHES (MM) BREAK SHARP EDGES .015 (1.381) MAXIMUM INSIDE CORNER RADIUS .030 (1.762) MAXIMUM THREADS CONFORM TO FEDERAL STANDARD H-28 TAPERED THREADS CONFORM TO API 6A BOLT HOLES MUST STRADDLE COMMON CENTERLINE FINISH 250 RMS ALL DIA'S CONCENTRIC WITHIN .010 (1.254) T.I.R.	TOLERANCE .X ± .030 (10.762) .XX ± .015 (10.381) .XXX ± .005 (10.127) ANGLE ± 0° 30'	DESCRIPTION PUMP ASSEMBLY: A0413 RH, W/1 NPT X 1/2 NPT FLUID END, ABRASIVE SERVICE PISTON, DISC VALVE ASSEMBLIES	DRAWN BY: WILLIAMS, ANTHONY	DATE: 17-FEB-2011	<b>FMC Technologies</b>	
				DRAFTING CHECK: LOUDERMILK, STEVE	DATE: 18-AUG-2011		DESIGN REVIEW: MCCLAIN, MATHEW
				MANUFACTURING APPROVAL: APPROVED BY: LYON, TIM	DATE: 21-SEP-2011	LATEST ECN NO. 5026111	REV. C
				DRAWING NUMBER DUS00004967		SHEET 1/2	



ITEM	DESCRIPTION	QTY
1	POWER FRAME :	1
2	CRANKSHAFT :	1
3	CONNECTING ROD :	2
4	ROD BEARING: HALF SHELL	4
5	WRIST PIN:	2
6	CROSSHEAD:	2
7	SEAL HOLDER:	2
8	SEAL: PONY ROD	2
9	BACK COVER:	1
10	GASKET: BACK COVER	1
11	BALL BEARING:	2
12	RETAINING RING:	2
13	SHAFT SEAL:	2
14	KEY: 3/16 SQ X 1.5 LG	1
15	PIPE PLUG: 1/4 NPT	1
16	PIPE PLUG: SQ HEAD, 3/4 NPT	1
17	ELBOW: 1/4 FEMALE NPT	1
18	NIPPLE: 1/4 SCH 40, 1/4 NPT X 1.25	1
19	NIPPLE: 1/4 S40, 1/4 NPT X 2.00LG	1
20	REDUCER: 1/4 NPT X 1/8 NPT	1
21	LUBE VENT: 1/8 PTF	1
22	CAP SCREW: HEX HD #10 X .75 LG	2
23	CAP SCREW: HEX HEAD, 3/8 X .75 LG	6
24	BOLTING STRIP: NOT SHOWN	1
25	OIL SLINGER: RH	1
26	HEX NUT: #10 NOT SHOWN	2

<p><b>UNLESS OTHERWISE SPECIFIED</b></p> <p>DO NOT SCALE THIS DRAWING</p> <p>BREAK SHARP EDGES .015 [0.381] MAXIMUM</p> <p>INSIDE CORNER RADII .030 [0.762] MAXIMUM</p> <p>ALL SURFACE TEXTURES Ra 250 MICRINCHES [6.3 MICROMETERS]</p> <p>WELDING SYMBOLS PER AWS A2.4-2012</p> <p>THREADS TO ASME B1 SERIES</p> <p>ALL COAXIAL DIA'S TO .010 [0.254] TIR TO SINGLE AXIS</p>		<p>ALL DIMENSIONS IN INCHES [MILLIMETERS]</p> <p>TOL ON ANGLE +/- 0.5 DEG</p> <p>X +/- .060 [1.524]</p> <p>.X +/- .030 [0.762]</p> <p>.XX +/- .015 [0.381]</p> <p>.XXX +/- .005 [0.127]</p> <p>DIM AND TOL PER ASME Y14.5-2009</p> <p>THIRD ANGLE PROJECTION</p> 		<p>DRAWN BY HIITOLA, ERIC C.</p> <p>DRAFTING CHECKER HIITOLA, ERIC C.</p> <p>DESIGN REVIEWER ROTHE, MICHAEL</p> <p>MANUFACTURING APPROVER</p> <p>APPROVER LYON, TIM</p>		<p>DATE 19-NOV-2019</p> <p>DATE 19-NOV-2019</p> <p>DATE 03-DEC-2019</p> <p>DATE</p> <p>DATE 05-DEC-2019</p>		<p>Copyright TechnipFMC. Unless otherwise agreed in writing, this document and all information contained herein is the confidential and exclusive property of TechnipFMC.</p> <p><b>TechnipFMC</b></p> <p>DESCRIPTION POWER END ASSEMBLY: A04 RH, W/2.25 LG SHAFT, W/ NO MOUNTING HOLES IN BACKCOVER, LUBE VENT</p>		<p>SIZE D</p> <p>SCALE NONE</p> <p>ECN 5051097</p> <p>DWG NO DU500004948</p> <p>REV C</p> <p>SHEET 1/1</p>	
---	--	--	--	---	--	---	--	---	--	--	--



PRIVATE AND CONFIDENTIAL

THIS DOCUMENT AND ALL THE INFORMATION CONTAINED HEREIN ARE THE CONFIDENTIAL AND EXCLUSIVE PROPERTY OF FMC TECHNOLOGIES AND MAY NOT BE REPRODUCED, USED, DISCLOSED, OR MADE PUBLIC IN ANY MANNER PRIOR TO EXPRESS WRITTEN AUTHORIZATION BY FMC TECHNOLOGIES. THIS DOCUMENT IS ACCEPTED PURSUANT TO AGREEMENT TO THE FOREGOING, AND MUST BE RETURNED UPON DEMAND.

MANUFACTURER AGREES THAT ARTICLES MADE IN ACCORDANCE WITH THIS DOCUMENT SHALL BE CONSIDERED FMC TECHNOLOGIES' DESIGN, AND THAT IDENTICAL ARTICLES OR PARTS THEREOF SHALL NOT BE MANUFACTURED FOR THE USE OR SALE BY MANUFACTURER OR ANY OTHER PERSON OR ENTITY WITHOUT PRIOR EXPRESS WRITTEN AUTHORIZATION BY FMC TECHNOLOGIES.

ENGINEERING  
DIMENSIONAL  
OUTLINE

DESCRIPTION  
PUMP ASSEMBLY; A0413 RH,  
W/1 NPT X 1/2 NPT FLUID  
END, ABRASIVE SERVICE  
PISTON, DISC VALVE  
ASSEMBLIES

DRAWN BY: WILLIAMS, ANTHONY	DATE: 17-FEB-2011
DRAFTING CHECK: LOUDERMILK, STEVE	DATE: 18-AUG-2011
DESIGN REVIEW: MCCLAIN, MATHEW	DATE: 30-AUG-2011
MANUFACTURING APPROVAL:	DATE:
APPROVED BY: LYON, TIM	DATE: 21-SEP-2011

**FMC Technologies**

LATEST ECN NO. 5026111	REV. C
DRAWING NUMBER DU500004967	SHEET 2/2

COPYRIGHT FMC TECHNOLOGIES