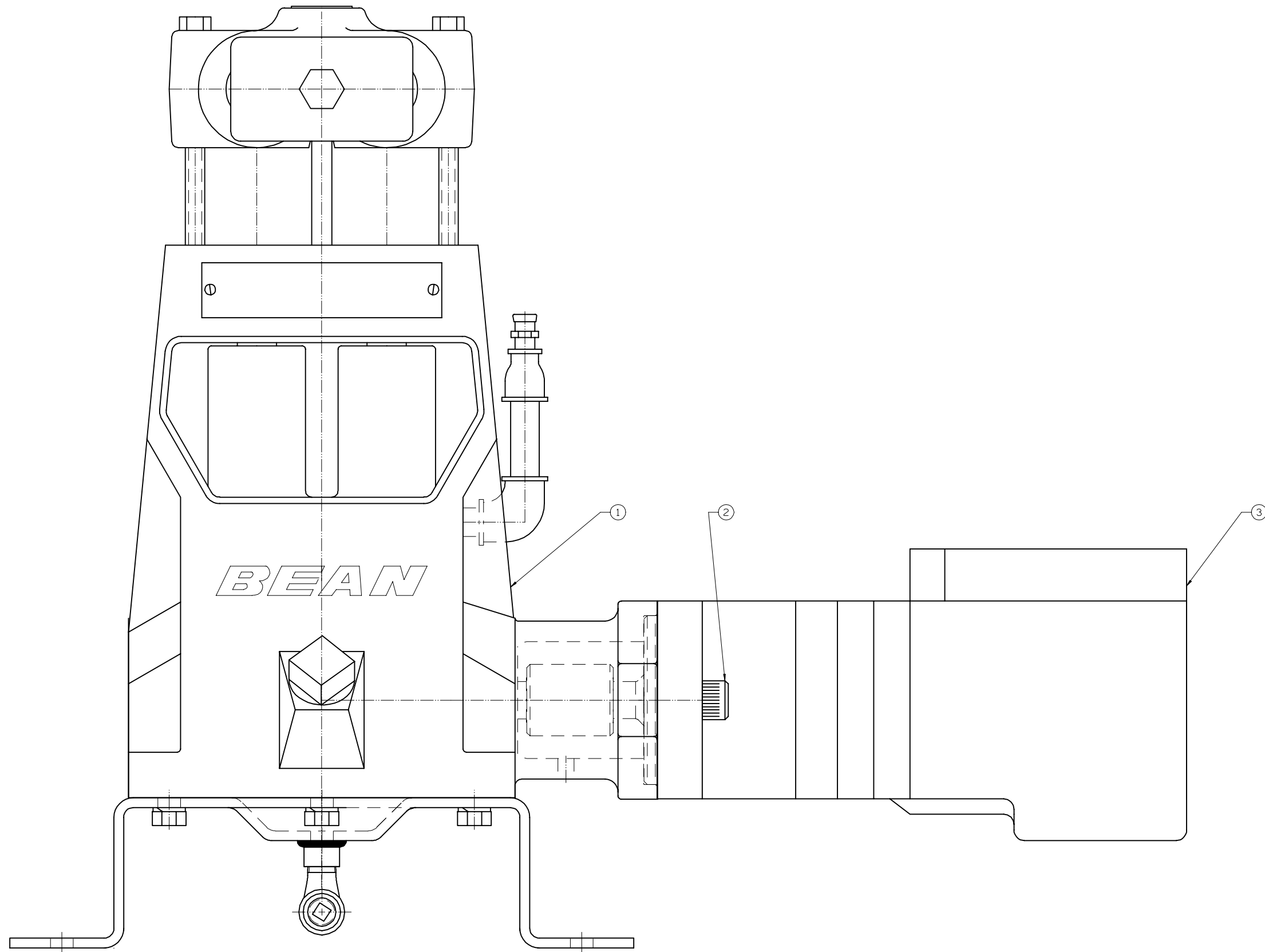


ITEM	NO. REQD	PART NO.	PART NAME
①	1	P524371	A0413 PUMP
②	2	3267347	SCO HD CAP SCREW: 1/2" - 13 UNC
③	1	P505116	MOTOR: 2000 SERIES 6.2 CID



<small>This drawing is the property of FMC Technologies, and may not be used, reproduced, published, or disclosed to others, without express authorization of FMC Technologies.</small>			
<small>Unless Otherwise Specified:          Round: All bars &amp; diameters .0005          All diameters concentric within .001 T.L.R.          Angles ±1/2°          .X ±.1          .XX ±.015          .XXX ±.005          Finish 125 RMS          All dimensions are in inches</small>		<b>PUMP UNIT</b> A0413, W/2000 SERIES HYD MOTOR	
<small>RELEASED FOR PRODUCTION</small>		<small>DRAWN</small> BKM 04-23-04	<small>SCALE:</small> NONE
<small>ECN</small>	<small>DATE</small>	<small>CKD.</small> RMC 04-23-04	<small>SIZE</small> DRAWING NO.
<small>REV</small>	<small>WAS</small>	<small>APPD.</small> GG 04-23-04	<small>D</small> 6700DU5012829

A	NEW RELEASE	✓	BKM	04-23-04
REV	WAS		ECN	BY DATE

6700DU5012829

COPYRIGHT FMC TECHNOLOGIES